



## College Principal's Report

### SCHOOL COUNCIL ELECTIONS 2020

The School Council elections are open for nominations as of Friday 7 February. There are 6 Parent, 1 Student and 2 DET vacancies to be filled. Included in this newsletter is a School Council Elections – Information for Parents factsheet and a Notice of Election and Call for Nominations schedule. Nomination forms are available from both General Offices and close at 4:00pm on Friday 14 February 2020.

### STANDING COMMITTEES

If you are unable to commit to School Council but would still like to contribute to the College's future direction, please consider joining one of the School Council's sub committees. Members meet twice a term on a Tuesday night and all recommendations made by the committees are taken to School Council. Being a member of a committee also enables greater understanding of how the school operates and how decisions are made.

The sub committees are:

- Education
- Student Engagement & Well Being and Community
- Resources
- Finance

It is vitally important that we have parent input. If you are interested in joining one of the committees or have any questions, please contact Joanne Armarego on 9407 9700 or [armarego.joanne.r@edumail.vic.gov.au](mailto:armarego.joanne.r@edumail.vic.gov.au).

### EVERY DAY COUNTS!

It is important that parents advise the school for any absence. It is also important that parents contact the school if their child will be absent from school for 5 or more days, so catch up work can be arranged.

Refer to the tables below for Approved and Unapproved reasons for absence.

APPROVED REASONS FOR ABSENCE	UNAPPROVED REASONS FOR ABSENCE
Illness	Driving lessons
Funeral	Personal issues (without further explanation)
Job interview	Family commitments
Medical / dental appointments (which cannot be arranged out of class time)	Car or bike breakdowns
Court appointments	Sleeping in or missing the bus
Court counselling	SAC / SAT preparation or completion of work due in other subjects
College / State / National representation in sport	Part time work commitments or Centrelink appointments
Licence testing (P Plate's Only)	Supporting upset friends or timetable mix ups

### CORONAVIRUS UPDATE

The College has been keeping families up to date via email with the latest advice from the Department of Health and Human Services (DHHS). The last update received from DHHS was on 3 February and an email was subsequently sent out to parents.

It is important we have your correct details so we can keep you up to date with important information. If you are not receiving emails – can you, please contact the office and advise your correct email address.

# College Principal's Report

## OUR PARTNERSHIP WITH YOU TO SUPPORT STUDENTS ACHIEVING THEIR BEST

A reminder that it is Parent Teacher Interviews on Wednesday 19<sup>th</sup> February. The parent portal will be open for bookings from 9:00am Thursday 13 February to 11:59pm Tuesday 18 February.

We are keen to build and maintain positive relationships with the parents of our students, as parents are important partners in ensuring the best educational outcomes. We invite you to a conference with teachers and encourage you to share your thoughts on your child's strengths and weaknesses. It is important that you talk to your child before the interview and find out any specific concerns that might exist. It is important that students also attend the interviews. We look forward to meeting with you.

Here are some tips on making the most of the interviews.

### What can you expect?

**A two-way conversation.** Just as you want to learn about your child's progress at school, we want to hear from you about how you think your child is doing. When teachers know about children's talents, interests, needs and dreams, they are better able to help their learning.

**Emphasis on learning.** The focus of the conference is your child's learning. We want to discuss how well your child is doing and what we can do to support even better learning. Come prepared with any questions you would like to ask the teacher.

**Opportunities and challenges.** Teachers will always try to give you positive feedback about your child and areas for improvement. You will know your child's strengths and areas of difficulty. Together, you and the teacher can explore ways to help your child with challenges.

### What will be talked about?

**Progress.** How is your child coping? Is your child performing at the expected age and grade level? What are your child's strengths? Where are the areas for improvement?

**Your thoughts.** Let the teacher know how you feel about your child's progress and abilities. Tell the teacher about anything you think needs extra attention.

**Learning at home.** Ask what you can do at home to help your child learn.

**Follow-up.** Talk with your child about the conference. Share with your child what you have learned. Show how you will be helping with learning at home. Pass on praise. Ask for your child's views on how learning can be improved.

Please do not hesitate to contact us if you have any queries. Parents focused on their children's education also make a huge difference in a student's achievement.

## SCHOOL PHOTOS 2020

To be able to view the images of your child and order photos, you will need to register online.

- 1.) Go to <https://order.arphotos.com.au>
- 2.) Enter the 2020 image code for your child  
(from their personalized flyer)
- 3.) Fill in your email and mobile details

That's it! You'll be notified by email/SMS when images are ready to view and purchase.

In the webshop you can view photos and customize your photo package; Choose ANY layout, ANY image plus purchase digital image downloads.

Even if you registered last year, you still need to register again this year to link your child's images for the current year with your details.

To be notified when images are ready to view – Register Online Now.

  
Trish Horner



## IMPORTANT INFORMATION ABOUT STUDENT HEALTH

If a student is unwell every attempt will be made to contact parents, guardians or emergency contacts. In the event of serious injury or illness where a nominated person cannot be contacted, a decision will be made in the best interest of the student.

This is why it is vitally important that student records are maintained with medical conditions, allergies and special requests. If your child requires medication at school this should be monitored through sickbay.

### IMMUNISATION DATES - MIDDLE YEARS CAMPUS:

Thursday 26 March                      Yr 7 Girls & Boys (HPV1) and Boostrix  
Wednesday 21 October                Yr 7 Girls & Boys (HPV2)

*By now, all Year 7 students will have received their immunisation cards, if the card has not been returned please do so as soon as possible. Spare cards are available from the General Office.*

### IMMUNISATION DATES - SENIOR CAMPUS:

Wednesday 17 June                    Yr 10 Girls & Boys Meningococcal

*As yet immunisation cards for Year 10 students have not been issued.*

**All cards must be returned signed even if the student is not being vaccinated.**

In 2015 the Public Health and Wellbeing Regulations 2009 were amended to authorise schools to release parent and student information to local councils so that councils can follow up with parents after the consent forms have been distributed. This means that we will provide the local council with your contact details and a local council representative may contact you with vaccine program information. If you do not wish for your details to be provided to your local council, please advise the Principal in writing as soon as possible. Alternatively you can contact the officer responsible for the vaccine program at Whittlesea Council in the event that you have queries about your contact details.

### ANAPHYLAXIS

Anaphylaxis (a severe, rapidly progressive allergic reaction that is potentially life threatening) affects a number of students at the College.

If you have a child with this condition and have not alerted the College it is imperative you do so immediately.

Parents who have received forms to be filled out can you please return them so we can update our records.

One of the most common allergens are nuts and eggs and we ask that parents make their children aware of this condition, and to be careful when sharing food with other students.

If you have any concerns or queries regarding this condition please don't hesitate to contact the College.

### ASTHMA

Asthma affects approximately one-fifth of our student population. These students are encouraged to use their medication accordingly under the family doctor's instruction, i.e. before sport if needed and students should have access to this medication at all times. Ventolin inhalers and spacers can be obtained at various locations around the school.

On Thursday 28 March the Athletics Carnival will be taking place. Students should wear appropriate clothing, a hat and apply sunscreen regularly to avoid the pain and danger of sunburn.

The PE curriculum offers a wide variety of sports and students are expected to participate. In the interest of dental safety a mouthguard should be worn when involved in sporting activities.

### HEAD LICE

While children are at school many families will have contact with head lice. Head lice are small wingless, blood-sucking insects. Their colour varies from whitish-brown to reddish-brown. Head lice only survive on humans. If isolated from the head, they will die very quickly usually within 24 hours.

People get head lice from direct hair to hair contact with another person who had head lice. This can happen when people play, cuddle or work closely together. Head lice do not have wings or jumping legs so they cannot fly or jump from head to head. They can only crawl. Many lice do not cause an itch so you have to look carefully to find them; it is a good idea to check your child's hair periodically.

#### Treatment

A lotion can be used to treat head lice. This can be purchased at a Pharmacy. Another method is by using conditioner. According to the Health (Infectious Diseases) Regulations 2001, children with head lice can be readmitted to school after treatment has commenced.

The following website offers resources and further information: <http://www.health.vic.gov.au/headlice> .

### INFECTIOUS DISEASES

If your child has been diagnosed with an Infectious Disease (e.g. measles, chicken pox, etc) please ensure they have a clearance from the doctor before returning to school.

If you have any concerns regarding your child's health or safety don't hesitate to call Cathy Cranfield on 9407 9700 between 8:30am and 3:00pm.

**Cathy Cranfield First Aid Attendent**

# Senior Campus Report

## SENIOR CAMPUS PRINCIPAL'S REPORT

It is with great enthusiasm that I am writing the first Senior Campus Report for 2020. I feel privileged to be the Senior Campus Principal and I aim to do everything that I can to make Mill Park Secondary College a great place of learning where all students feel that they belong and succeed.

I have been very impressed with the respect shown by the students and the professionalism of the staff. Students at this school have the opportunity to create great futures for themselves if they set aspirational goals and apply their energy to their studies during their final secondary school years.

### ASSEMBLY

This year we had the first whole campus assembly at the Senior Campus.

This was professionally run by our School Captains and Vice Captains, Felix Werner, Tharshika Srikanalanathan, Nathan Begg and Nicoletta Drakopoulos. Students all received the same message concerning the importance of attending school every day and using class time effectively. As well as this, being part of the school community means being in uniform, on time to class and remembering to leave mobile phones in lockers.

The students were also entertained by a solo performance from Damian Pungor singing "Blame It On Me". This was followed by a band consisting of Felix Werner on drums, Henry Werner on bass, Kerry Yang on guitar and Claudia Addamo on vocals singing "Still Into You". There are obviously some very talented students at this school.

It's been a great first week and students should now be organised to focus on their studies.

### SCHOOL PHOTOS

School photos were held today for Senior Campus students and there is a catch-up day on Wednesday 12<sup>th</sup> February for any students that were away.

### VCE INFORMATION NIGHT AND PARENT STUDY SKILLS WORKSHOP

On Monday 24<sup>th</sup> February we will be holding a VCE information session at the Senior Campus from 6:00pm to 6:45pm followed at 7:00pm by a parent study skills workshop. The VCE information session is open to any parents and students who want to find out more about VCE subjects and requirements. The parent study skills workshop is aimed specifically at the parents of current Year 10-12 students and is run by an organisation called Elevate.

### YEAR 10 ELEVATE

Year 10 students all have the opportunity to participate in a study skills program run by a company called Elevate. Students in 10A to 10E will have already attended their session on Wednesday 5<sup>th</sup> February and the remaining Year 10 students who are in 10F to 10J will have their session on Wednesday 26<sup>th</sup> February. These are very important sessions and all Year 10 students are expected to attend as they outline strategies to maximise learning and prepare for exams.



**Richard Dungey**  
Senior Campus Principal





# Senior Campus Report

## Homework Club

Homework Club is held in both campus libraries each week after school (Senior Campus- Thursday, Middle Years Campus- Wednesday). Teachers are on hand to assist students and afternoon tea (fruit, toast, cake, cordial) is served at 3:30pm. All students are welcome to attend.

*Ms Bronwen Quayle*  
Senior Campus Librarian



**Outbox Catering are the new suppliers for the Canteen at both Middle Years Campus and Senior Campus.**

Outbox Catering offer a high standard of food and an excellent menu with quality ingredients. They cater to suit all backgrounds, religions or dietary needs at accessible prices.

Please support the Mill Park Secondary College Canteen by checking them out at recess and lunch!

\*New menu will be available soon.



LIKE US at <https://www.facebook.com/millparksc/>

This screenshot shows you where to find SEE FIRST when you are liking the page.

### INSTRUCTIONS

1. 'Like' Mill Park Secondary College.
2. To the right of the 'Like' button you will see 'Following' with a drop down arrow.
3. Please select 'See First in Newsfeed' and 'Notifications On (Events)'.



# Senior Campus Report

## NEWS FROM THE SCIENCE LAB

As a Science Laboratory Technician at Mill Park Secondary College I am proud to introduce one of the most extremely equipped and organised Laboratories in this region.

I can't wait to visit eager students in the Science Lab and share my experience and knowledge with them during their practical activities.

Our laboratory is well equipped with high technology instruments included but not limited to: Ammeters, Animals and Plants cell, Atomic models, Autoclave, Biological specimens, Calorimeters, Data Loggers, Digital Colorimeters, Digital Electronic Balances, Digital PH Meter, Hot Water Bath, Incubators, Oven, Portable fume cupboard, Scientific Microscopes, Variety of different laboratory glass wear, Ultrasound Motion Detector, Van De Graff, Electric Motors, Light Boxes, Galvanometers, Electro Thermal, Hoffman Voltmeter, Hotplates, Infrared Thermometer....

Students will experience scientific practicals in a fun but safe environment as the lab is equipped with safety materials including eyewash stations, fire extinguishers, spill kits, and a complete set of PPE (Personal Protective Equipment) for each individual student.

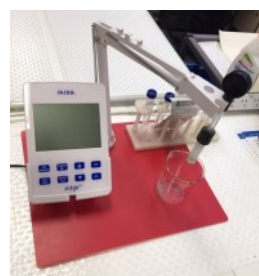
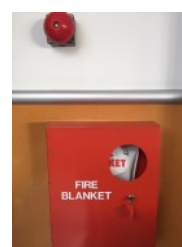
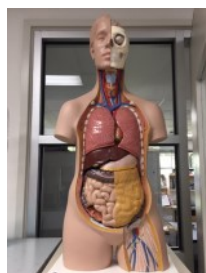
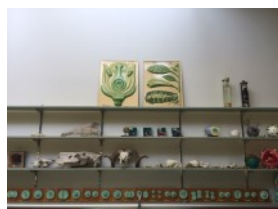
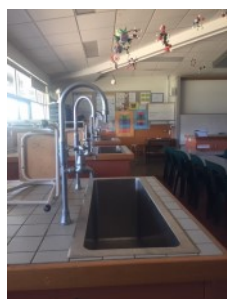
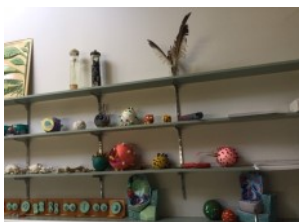
I wish you a very exiting year ahead and looking forward to see our Scientists soon.

*Ms Mobasser*

*Senior Campus Science Lab Technician*

**“Without Laboratories men of science are soldiers without arms.”**

Louis Pasteur





## EDUCATION PATHWAYS



### Gain Early Entry into Uni with The Duke of Edinburgh's International Award



Through our partnership with La Trobe University, Duke of Ed Awardees are rewarded with priority access to study via La Trobe's Aspire early admissions program, recognising that students are worth more than their ATAR.

This means that Duke of Ed Participants who have successfully completed their Bronze level or above will automatically qualify for the community engagement criteria of La Trobe University's Aspire Program.

"The highlight of my Award was the Service section because it improved my confidence by engaging with the community. This has allowed me to enter University feeling more confident within myself."

Annabel Johnston - La Trobe University  
Aspire student and Duke of Ed Awardee

A recent survey of Duke of Ed Gold Awardees in Victoria revealed that:



**92%** BELIEVE THE AWARD  
HAD A POSITIVE IMPACT ON  
THEIR EDUCATION

# Careers News

## EDUCATION PATHWAYS







The values that underpin volunteering – community, selflessness, generosity, dedication – are what The Duke of Ed is all about.

Structured as part of The Award, the Service section encourages young people to develop a sense of responsibility and compassion towards others with the aim of creating a lifelong habit of community involvement and voluntary service.

### The Duke of Ed can accelerate your learning

NSW	VIC	QLD	WA
UNSW Australia Bonus ATAR Points	Provides early entry pathways at ACU & La Trobe University	Bond University Earn credits towards your QCE	Earn units towards WACE

### Your development journey

-  Get active and reach your fitness goals
-  Give back to your community
-  Unleash your talents and learn a new skill
-  Get outside your comfort zone



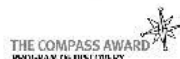
Start at the Bronze Level,  
then finish at Gold!

### How to get started

-  Call us on 03 8412 9333
-  Email us at [info@dukeofedvic.org.au](mailto:info@dukeofedvic.org.au)
-  Visit [www.dukeofedvic.org.au](http://www.dukeofedvic.org.au)



Awards Victoria Ltd. proudly provides:







## The Duke of Ed Employer Program gives young job seekers an edge



The Duke of Edinburgh's International Award - Employer Program greatly benefits Awardees as their skills and experience are recognised.

Awardees develop skills such as teamwork, leadership, resiliency, resourcefulness and the ability to communicate effectively. By recognising and endorsing The Award through the recruitment processes for entry level employees, employers are demonstrating The Award is a valuable pursuit for young people to explore their full potential.

Employers taking part in this initiative will ask prospective employees if they have achieved The Duke of Edinburgh's International Award in their recruitment process.

A recent survey of Duke of Ed Gold Awardees in Victoria revealed that:



**96%** INCREASED THEIR CHANCE OF GETTING A JOB & GAINED CONFIDENCE TO PURSUE THEIR CAREER GOALS

# Careers News

## EMPLOYMENT PATHWAYS



The Duke of Edinburgh's International Award gives young people **international accreditation** of their experiences



"I did community service, learnt new skills, connected with new people and learnt how to work in teams."

"And so when it came to interviewing for a job, I believe those skills actually gave me an edge, in terms of getting called for an interview and then in an interview being able to share stories of the things that I had learnt."

"The confidence I gained and experiences that I had I believe gave me an edge in entering the workforce and landing my first job."



"Leadership responsibility and respect for fellow citizens are important qualities we look for in our young employees."

"Hungry Jack's is proud to be a 'Duke of Ed Employer' as we believe these valuable life skills are cultivated through participation in The Award."

Mr Jack Cowin, Executive Chairman, Hungry Jack's

WHAT  
**EMPLOYERS**  
ARE LOOKING FOR

WHAT  
**THE AWARD**  
GIVES YOUNG PEOPLE



Get in touch to  
learn more

[info@dukeofedvic.org.au](mailto:info@dukeofedvic.org.au)



Awards Victoria Ltd. proudly provides:





# Careers News



## AWARD SECTIONS, LEVELS AND TIMEFRAMES



SERVICE



PHYSICAL RECREATION



SKILL



ADVENTUROUS JOURNEY



RESIDENTIAL PROJECT

	SERVICE	PHYSICAL RECREATION	SKILL	ADVENTUROUS JOURNEY	RESIDENTIAL PROJECT
<b>BRONZE 14YRS +</b>	3 months	3 months	3 months	2 days / 1 night	N/A
At least 1 hour per week. Plus an additional 3 months for either Service, Skill, or Physical Recreation					
<b>SILVER 15YRS +</b>	6 months	6 months	6 months	3 days / 2 nights	N/A
At least 1 hour per week. Plus an additional 6 months for either Service, Skill, or Physical Recreation					
<b>GOLD 16YRS +</b>	12 months	12 months	12 months	4 days / 3 nights	5 days / 4 nights
At least 1 hour per week. Plus an additional 6 months for either Service, Skill, or Physical Recreation					

## HOW CAN I GET STARTED?

If you're interested in starting your Award journey, visit [www.dukeofedvic.org.au](http://www.dukeofedvic.org.au) for more details and to decide on the program that's right for you.

You can contact us by phone (03) 8412 9333 or email [info@dukeofedvic.org.au](mailto:info@dukeofedvic.org.au)



[www.dukeofedvic.org.au](http://www.dukeofedvic.org.au)

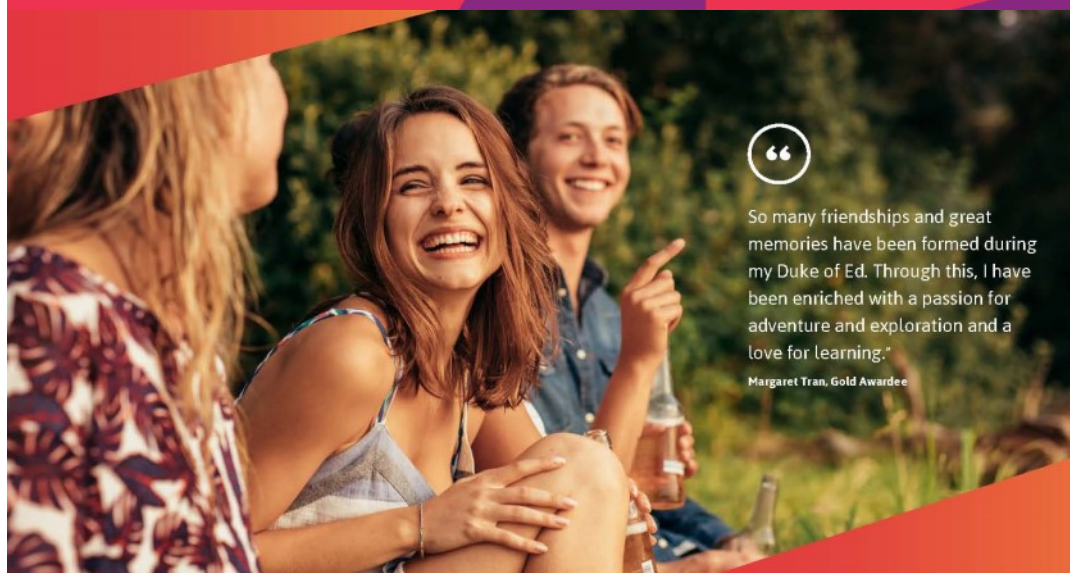
## SOME THINGS IN LIFE CAN'T BE GOOGLED!

Choose your own adventure, meet new friends and connect to a world of opportunity through the Duke of Ed—the world's leading youth achievement award.

[www.dukeofedvic.org.au](http://www.dukeofedvic.org.au)

## THE DUKE OF EDINBURGH'S INTERNATIONAL AWARD

AUSTRALIA - VICTORIA



So many friendships and great memories have been formed during my Duke of Ed. Through this, I have been enriched with a passion for adventure and exploration and a love for learning."

Margaret Tran, Gold Awardee

## AWESOME DUKE OF ED IMPACTS



Improved educational attainment



Improved employability and sustainable livelihoods



Social inclusion



Improved health and well-being



Increased participation in civic life



The environment



Gender equality



Reduced reoffending rates



Reduction and prevention of violence, conflict resolution and peace-building

## KEY BENEFITS



Authentic connections



Independence and problem solving



Access to education and employment pathways, expanding horizons

## PROVEN RESULTS



96%

Agree that the Award increased their chance of getting a job and gave them the confidence to pursue their career goals



92%

Agree the Award had a positive impact on their education



96%

Felt a greater sense of making a difference in the world

\*2016 Duke of Ed Victoria Gold Awardee Survey results



**BASELINE PRESENTS**

## Youth Equity Strategy 2020

**Get active!  
Be heard!  
Get involved!**



Baseline

Youth Equity Strategy (YES) is a great opportunity to develop skills in leadership, public speaking, designing and delivering training sessions and consultations. It also provides young people with an opportunity to have a say on current and topical issues and express their opinions and concerns.

### **What will the YES Committee do?**

- Receive ongoing training and support to develop a range of skills.
- Develop and deliver workshops, consultations and presentations.
- Advocate for the needs of local young people.
- YES is now incorporating the Duke of Edinburgh Award

**When:** Tuesdays 4.30pm-6.00pm

**Dates:** Every Tuesday during school terms

**Where:** Edge Services for Young People  
Shop MM1, Westfield Plenty Valley  
415 McDonalds Road, Mill Park

To register contact Sali on **9404 8800** or email [baseline@whittlesea.vic.gov.au](mailto:baseline@whittlesea.vic.gov.au)  
All activities are supervised by Council's Youth Services staff.



Find us on  
**Facebook**



**Baseline**  
FOR YOUNG PEOPLE



[www.whittleseayouth.com](http://www.whittleseayouth.com)  
e. [baseline@whittlesea.vic.gov.au](mailto:baseline@whittlesea.vic.gov.au)  
p. 9404 8800



# CAREERS UPDATE

## JANUARY 2020

**Come as you are,  
leave as you want to be**



## MELBOURNE CHANCELLOR'S SCHOLARSHIP RECIPIENTS

The University proudly congratulates our new Melbourne Chancellor's Scholarship recipients. The Melbourne Chancellor's Scholarship provides a tuition fee-exempt Commonwealth Supported Place valued up to approximately \$30,500, in addition to a living allowance of up to \$15,000 for Victorian students (\$30,000 for interstate students) the three year duration of their undergraduate studies. The living allowance will be extended for students enrolled in an extended bachelor degree and/or a concurrent diploma, excluding honours.

Students are eligible for the Chancellor's Scholarship, when they achieve an ATAR, or equivalent, of 99.90 or above. The University made 88 Melbourne Chancellor's Scholarship offers to Victorian students in 2019 including four to Indigenous students.

This year's recipients will benefit from new student experience initiatives that include our inaugural Melbourne Commencement Ceremony to welcome all incoming undergraduate students, part of our broader Melbourne Orientation program designed to maximise students' start of university experience, and peer mentoring. For more information please see page 4.

Congratulating the new scholars, University of Melbourne Provost, Mark Considine said that the high achievers would be joining a world-class institution that celebrates academic achievement and the diversity and richness of a truly international community.

"The University of Melbourne prepares students for any future, with an academic program that provides breadth and depth, as well as overseas study. I am delighted to welcome another outstanding group of students to study with us in 2020," Professor Considine said.

The Chancellor's Scholarship is one of the most generous in Australia and offers guaranteed pathways into graduate study including the Juris Doctor and Doctor of Medicine.

The list below represents some of the top performers who received a Melbourne Chancellor's Scholarship offer in December 2019.

Student name	School name
Dara King	Bacchus Marsh Grammar
Olivia Putland	Ballarat Clarendon College
Yang Liu	Ballarat Clarendon College
Yiran Wang	Box Hill Institute - CAE campus
James Kelly	Brighton Grammar School
Andrew Zeng	Camberwell Grammar School
Ian Chen	Camberwell Grammar School
James Gunasegaram	Camberwell Grammar School
Oliver Papillo	Camberwell Grammar School
Eugene Wang	Carey Baptist Grammar School
Wen Hao Jiang	Caulfield Grammar School
Isabelle Bruglieri	Genazzano F.C.J. College
Georgia Lyras Musgrave	Haileybury Girls College
Hongyuan Chen	Haileybury Girls College
Saniyak Shah	Haileybury Girls College
Sahil Nandra	Haileybury Girls College
Rachel Ko	Huntingtower School

Rong Jin  
Kennice Tan  
Yu Ling Cheung  
Yinghui Wang  
Christina Vakkas  
Edward Xu  
Fedele De Campo  
Jasper Harrington  
Jeremy Bolton  
Kyle Collins  
Kian Lalla  
Pedraam Hosseini  
Yoonpyo Brian Lee  
Zachary Angus  
Isaac Rozental  
Ella Hartman  
Sebastian Paz

Grace Wang  
Harrison Liu  
Matthew Lee  
Tianqi Feng  
Yulin Wu  
Thomas Woods  
Zhihan Jiang  
Bronte Coxhill  
  
Edward Grimsey  
Daniil McIntyre  
Jefima  
Patrick Grave

Loreto Mandeville Hall  
MacRobertson Girls High School  
MacRobertson Girls High School  
McKinnon Secondary College  
Melbourne Girls Grammar  
Melbourne Grammar School  
Melbourne Grammar School  
Melbourne Grammar School  
Melbourne Grammar School  
Melbourne High School  
Melbourne High School  
Melbourne High School  
Mentone Grammar School  
Mount Scopus Memorial College  
Our Lady of Zion College  
Penleigh and Essendon Grammar School  
Ruyton Girls' School  
Scotch College  
Scotch College  
Scotch College  
Scotch College  
St Kevin's College Toorak  
St Kevin's College Toorak  
Strathcona Baptist Girls Grammar School  
Trinity Grammar School  
Williamstown High School  
Xavier College  
Xavier College

"This list only includes Victorian students who gave permission for their names to be published in the press release 12 December 2019."



## INTERSTATE MELBOURNE CHANCELLOR'S SCHOLARSHIP RECIPIENTS

The University made the following Melbourne Chancellor's Scholarship offers to interstate students during December 2019 and January 2020:

State/ Territory	Domestic and International Scholars	Indigenous Scholars
New South Wales	33	2
Queensland	9	2
South Australia & Northern Territory	18	2
Western Australia	17	
Tasmania	4	2
Australian Capital Territory	3	

 **MORE INFORMATION**

## MELBOURNE NATIONAL MERIT SCHOLARSHIP RECIPIENTS

The University made the following National Merit Scholarship offers to interstate students who achieved an ATAR of 99 to 99.85:

State/ Territory	Students
New South Wales	132
Queensland	79
South Australia & Northern Territory	58
Western Australia	85
Tasmania	18
Australian Capital Territory	19

# TIPS FOR CAREER PRACTITIONERS: HOW TO HELP YOUR STUDENTS ACCEPT THEIR OFFER TO STUDY AT MELBOURNE

Once a student receives an offer from the University of Melbourne, they begin a dialogue with us that will take them from the initial offer until graduation, and beyond as an alumnus.

After each offer round, students will receive emails that ask them to "take action" and complete a specific task. Each email will focus on one activity such as "accepting your offer" or completing the next stage of the enrolment process. It is crucial that students read and respond to all emails from the University. If they fail to respond to an email, they will get a reminder email but if they do not complete all nominated tasks by the lapse date, we will assume they no longer want the offer and we will re-offer that place to another candidate in the January offer round domestic.

If at any time from the offer stage to enrolment and commencing classes, students have any issue and need assistance they should contact Stop 1. The contact details of Stop 1 are on each email they will receive.

If any of your students come back to school and seek your help with their enrolment, the best advice to help put them on the right path to a successful transition to tertiary study is to tell them the following:


1. Open and read ALL emails you get from the University of Melbourne
2. Follow the instructions within the email (be aware of closing dates)
3. If in doubt contact Stop 1.

### STOP 1 OPENING HOURS

<b>Chat online</b>	<a href="https://students.unimelb.edu.au/stop1">https://students.unimelb.edu.au/stop1</a>	Monday to Friday: 1pm-6pm Last chat requests close at 5.30pm
<b>Submit an enquiry</b>	<a href="https://students.unimelb.edu.au/stop1">https://students.unimelb.edu.au/stop1</a>	Anytime
<b>Call us</b>	Within Australia: 13 MELB (13 6352) Outside Australia: +61 3 9035 5511	Monday: 9am-5pm Tuesday and Wednesday: 9am-6pm Thursday and Friday: 10am-5pm
<b>Drop in Stop 1 (Parkville)</b>	757 Swanston Street, Parkville (Main entrance off Grattan Street)	Monday: 9am-5pm Tuesday and Wednesday: 9am-6pm Thursday and Friday: 10am-5pm
<b>Drop in Stop 1 (Southbank)</b>	234 St Kilda Road, Southbank (The Hub, Building 863)	Monday to Friday: 9am-5pm

## 2020 SEMESTER DATES

Incoming students can view the 2020 academic calendar here:

 **VIEW CALENDAR**



# UNIVERSITY ACCOMMODATION OPTIONS STILL ACCEPTING APPLICATIONS



It's easy for students to feel at home at Melbourne with a large range of accommodation options surrounding our Parkville campus. Information on a mix of options, including our University Accommodation, residential colleges, homestay and private rentals, can be found here:

[VIEW WEBSITE](#)

## UNIVERSITY ACCOMMODATION

It's not too late for students to apply for accommodation for Semester 1. University Accommodation is designed to enhance students' university experience and provide a quick, easy and trusted way to apply for student housing. All residences have the University of Melbourne tick of approval and are located within walking distance of campus.

Current residences for undergraduate students include:

- 303 Royal Parade
- UniLodge Lincoln House
- International House
- Medley Hall

303 Royal Parade offers studios and shared apartments in the heart of Parkville. Students can experience the best of everything in this location; a 15-minute tram ride will take them to our Parkville campus, the city centre and the popular student district of Brunswick, with the additional benefit of having parklands just across the road.

In 2020, we have a brand-new residence to introduce - UniLodge Lincoln House, a University of Melbourne approved accommodation. Situated 430m from our Parkville campus and 750m from the city centre, this residence provides affordable, dormitory style living starting from \$308 per week (with utilities included). Students can choose a private bed room with ensuite bathroom or a private bed room with access to shared, stand-alone bathrooms on their floor. Lincoln House residents can enjoy a master-chef kitchen, meeting rooms, gym facilities, cinema room, pool tables, fireplace and rooftop terrace.

International House and Medley Hall are university-owned residential colleges that provide academic tutorial support, an extensive alumni network, meals served in Dining Halls and a range of activities for students to be involved in.

[MORE INFO](#)

[APPLY](#)

## RESIDENTIAL COLLEGES

### Semester 1 2020, places are still available

Many of our residential colleges continue to welcome new applications of residence for Semester 1 2020. Colleges provide students with their own furnished room, three meals each day, weekly academic tutorials and extensive pastoral care support, along with a rich program of social, cultural, sporting, mentoring and leadership opportunities.

Financial assistance is also available with \$7.5 million in scholarships awarded each year, more than one-third of college residents receive a form of financial assistance.

Interested students are strongly encouraged to apply as soon as possible via the intercollegiate website below. The initial application form takes approximately 4 minutes to complete. Once submitted, the applicant's college of first preference will be in touch directly with next steps.

For more information, please contact the Intercollegiate Office:

[MORE INFO](#)

[EMAIL](#)

Phone: (03) 9248 8428





# STUDENTS COMMENCING AT THE UNIVERSITY OF MELBOURNE IN 2020

## THE TRANSITION TO MELBOURNE

Moving from secondary school to tertiary study is an exciting time for students, but it can also be quite challenging with some students struggling to settle into university life. The University has always had a series of programs to help students with this transition.

In 2020, the University will be introducing some exciting new programs as part of our Student Life strategy. Support for incoming students will begin the day they receive their offer and follow them all the way through to graduation, and beyond.



<b>Melbourne Commencement Ceremonies</b>	<p>Students will be welcomed to the University at the Royal Exhibition Building in Carlton at our inaugural Melbourne Commencement Ceremony (MCC). The MCC marks the beginning of their journey as a University of Melbourne student and signals the start of their studies in the same way that graduation will celebrate the completion at the end of their degree.</p> <p>At the MCC students will be welcomed by University leaders and meet their first-year peers. They will also hear from guest speakers and industry influencers.</p> <p>After the MCC, students will collect a limited-edition University hoodie* and have the chance to interact with their new academic community in a festival atmosphere with food and entertainment.</p> <p>*Students must register for the MCC in order to receive a hoodie.</p>
<b>Melbourne Peer Mentor Program</b>	<p>The Melbourne Peer Mentor Program is designed to help make the transition to university easy and enjoyable for students. They will be matched with a later year student from their faculty, as well as a group of first year peers. Students will meet their mentor during Orientation at the MCC and have organised meetings throughout their first year, as well as the ability to chat anytime with our my.uniLife app (see below).</p>
<b>my.uniLife App</b>	<p>The my.uniLife app has been developed to help students with the following activities:</p> <ul style="list-style-type: none"> <li>• Tick off tasks on their student enrolment checklist, so they don't miss any important steps</li> <li>• Meet and chat with their Melbourne Peer Mentor and group</li> <li>• Check out and register for university events, starting with Melbourne Orientation</li> <li>• View classes and activities in one place with a built-in timetable</li> <li>• Look up university clubs and societies they might like to join</li> <li>• Find answers fast with FAQs, or get in touch with Stop 1</li> </ul> <p>Students will be invited to download the app when they receive their offer.</p>
<b>Academic Advice</b>	<p>All undergraduate students will be supported by an academic adviser who will guide them to develop their academic interests, passions and skills. They will also help with study decisions so they can maximise their university experience.</p> <p>Students will be matched with an academic adviser towards the end of Semester 1 and will be introduced to them via email and the my.uniLife app.</p>
<b>Melbourne Orientation</b>	<p>Semester 1 2020 Orientation runs from Monday 24 February to Friday 28 February 2020.</p> <p>Melbourne Orientation includes:</p> <ul style="list-style-type: none"> <li>• MCC</li> <li>• Meeting their Melbourne Peer Mentor and group for the first time</li> <li>• Faculty welcome and course information events (some of these are compulsory!)</li> <li>• Information sessions about fees, housing, developing skills and getting involved</li> <li>• Carnival day: students have the chance to join student clubs, sports teams and societies while enjoying music, roving entertainment, chill out areas and lots of free stuff including food, drinks and giveaways.</li> </ul> <p>Incoming students will be able to create their own online orientation itinerary to include all the above activities and much more.</p>

▶ MORE INFO

# HANSEN SCHOLARSHIP PROGRAM

The Hansen Scholarship Program is a flagship scholarship program at the University of Melbourne. Commencing in 2020, the Hansen Scholarship will offer 20 talented students a generous package of accommodation, financial support, mentoring and pastoral care. Applicable to any discipline, this scholarship program is the University's most generous equity scholarship, and provides full financial cover for accommodation near our Parkville campus, a yearly allowance for living expenses, as well as a tailored program of enrichment including academic orientation, study skills, mentoring and cultural activities. Students will also be supported in their next steps to graduate study or in their career. The first cohort, selected this year, will become the inaugural Hansen Scholars.

## Eligibility:

- Aged between 16-20 years old
- Australian citizen or permanent resident
- Current Year 12 student who will complete an Australian Year 12 or IB in Australia or overseas this year and will commence study at the University of Melbourne in 2021
- Achieve a minimum ATAR of 90.00
- Experience of difficult financial circumstances.

## Selection criteria:

- Academic excellence and a commitment to university study
- Demonstrated ability to achieve and overcome obstacles
- Evidence of applying skills and abilities to benefit others
- Demonstrated leadership skills and ability to work effectively in a team.

## Benefits:

- Free accommodation for 48 weeks each year at Little Hall residence in Lincoln Square South
- \$4,000 per year for general living expenses
- \$4,000 grant to support an approved activity such as an international exchange, an internship or similar
- Access to a mentor program, pastoral care, and enrichment programs available to all students at Little Hall
- A tailored program of mentoring and support exclusive to Hansen Scholars
- Priority access to graduate accommodation at Little Hall
- Next-steps funding in the year after completion of the Scholar's undergraduate degree (up to \$10,000 for a short-term activity or up to \$20,000 for further study).



## HANSEN SCHOLARSHIP PROGRAM INFORMATION SESSION

**Date:** Tuesday, 11 February 2020

**Time:** 6.00pm - 7.00pm

**Where:** Glyn Davis (MSD), B12.1 (Malaysian Theatre)

▶ **REGISTER NOW**



# EVENTS FOR VICTORIAN SCHOOLS

Month	Date	Event Title	Location
January	3-12	National Computer Science School Summer School	Parkville campus
February	17	TAASS Exploration Day	Parkville campus
February	TBC	Hansen Scholarship information evening	Parkville campus
February	27	Regional Careers Practitioner Seminar Bendigo	Bendigo
April	4	A Day at Melbourne (ADAM)	Parkville campus
April	16	Meet Melbourne Ballarat	Ballarat
April	20-23	Western District TIS	Hamilton, Colac, Warrnambool,
April	21	Meet Melbourne Shepparton	Shepparton
April	22	Meet Melbourne Albury	Albury
April	29	Meet Melbourne Geelong	Geelong
May	4	Shepparton TIS	Kyneton, Bendigo
May	5	Meet Melbourne Hamilton	Hamilton
May	5-6	Bendigo TIS	Kyneton, Bendigo
May	5	Regional Careers Practitioner Seminar Horsham	Horsham
May	7	Ballarat TIS	Ballarat
May	20-22	Gippsland TIS	Warragul, Traralgon, Sale
May	21	Open Night (formerly MMF) - Arts, Commerce, Law, Education	Parkville campus
May	26	Meet Melbourne Mildura	Mildura
May	28	Open Night (formerly MMF) - Design, Science, Engineering, IT, Veterinary Medicine, Agriculture	Parkville campus
May	TBC	Werribee Open Day	Werribee
June	3	Open Night (formerly MMF): Biomedicine, Science, Health Sciences	Parkville campus
June	10	Career Practitioners Seminar	Parkville campus
June	15-16	City TIS	RMIT
June	19	North East TIS	TBA
June	22-23	Central Highlands TIS	Ballarat, Maryborough, Horsham
June	24	Meet Melbourne Bendigo	Bendigo
July	14	Meet Melbourne Sale	Sale
July	21-24	Loddon TIS	Mildura, Echuca
August	16	Open Day	Parkville campus
September	TBC	Dookie Day	Dookie Campus
November	TBC	Dookie & Shepparton Rural Health CPS	Dookie
December	TBC	Course Information Day	Parkville campus

 **MORE INFO**

# FACULTY EVENTS VICTORIAN SCHOOLS

Month	Date	Event Title	Location	Faculty
February	TBC	Agriculture in Action	TBA	Agriculture
February	TBC	PC4G Intro 1	Parkville campus	Engineering
April	TBC	Connect Event	Parkville campus	TBA
May	9	BA for a Day	Parkville campus	Arts
May	18-24	National Careers Week	Australia wide	TBA
May	TBC	Food & Fibre Day	Dookie Campus	Agricultural
May	TBC	Werribee Open Day	Werribee	TBA
May	TBC	GV Rural Health Careers Workshop	Shepparton	MDHS
June	4	Code Masters	Parkville campus & Virtual	Engineering
June	9	The BIG Day IN	Parkville campus	Engineering
June	11	PC4G-Intro 2	Parkville campus	Engineering
June	22-26	Year 10 work experience	Parkville campus	Science & Engineering
July	2-3	Arts Hackathon	Parkville campus	Arts
July	4-10	Victorian Indigenous Engineering Winter School	Parkville campus	Engineering
July	5-8	Girl Power Camp	Parkville campus	Engineering
July	7	Girl Power Year 11 & 12 mentor Program catch up	Parkville campus	Engineering
July	9-10	McWhirter Conference	Parkville campus	Arts
July	13-24	Science Delivery Winter show	Parkville campus	Science
August	6	Amazing Spaghetti Machine Contest	Parkville campus	Engineering
August	15-23	National Science Week (Science Festival)	Parkville campus	Science
September	TBC	Dookie Day	Dookie Campus	TBA
September	30	Hands on Engineering & IT	Parkville campus	Engineering
October	1-2	Hands on Engineering & IT	Parkville campus	Engineering
October	18	Endeavour Engineering & IT Expo	Parkville campus	Engineering
October	29	PC4G-Intro 3	Parkville campus	Engineering
November	TBC	Dookie & Shepparton Rural Health CPS	Dookie	TBA
November	10 TBC	L'Oréal Girls in Science	Parkville campus	Science
November	26	PCG4 - Finale	Parkville campus	Engineering
November	30	Hands on Engineering & IT begins	Parkville campus	Engineering
November	TBC	ConocoPhillips Science Experience	Dookie Campus	Engineering
November - December	30-11	Science Delivery Summer Show begins	Parkville campus	Science
December	1-4	Hands on Engineering & IT continues	Parkville campus	Engineering
December	1-11	Science Delivery Summer Show continues	Parkville campus	Science

 **MORE INFO**



## BA (BACHELOR OF ARTS) FOR A DAY

**Date:** Saturday, 9 May 2020

**Location:** University of Melbourne, Parkville campus, Arts West building

**Eligibility:** Current Year 10 students and their parents

There are infinite pathways to explore in the arts, humanities and social sciences once you leave school – we know for many high school students, it can be hard to envision how those possibilities might look.

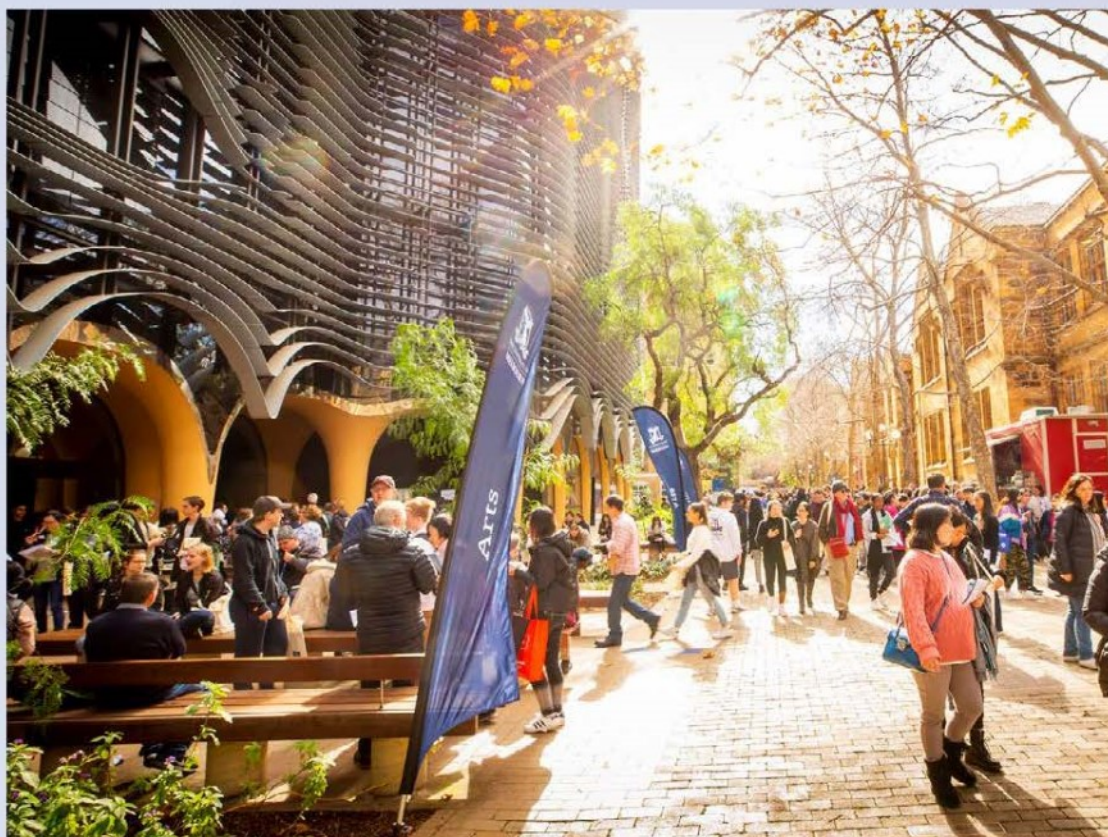
At BA for a Day, current Year 10 students will get a taste of what studying the arts, humanities and social sciences at the University of Melbourne can be like. They'll deep-dive into ancient worlds by interacting with archaeological artefacts in our unique object-based learning labs, and participate in a range of workshops across different subject areas throughout the day. They'll also meet current students and recent alumni from the Bachelor of Arts who'll talk about their experiences in the BA and beyond, and learn about the diverse and exciting careers a BA can lead to.

Parents are welcome to attend an exclusive parents' session, where they'll be able to speak with University of Melbourne staff before going on a guided tour of our campus conducted by current BA students.

Morning tea and lunch will be provided.

▶ **REGISTER**

▶ **EMAIL FOR MORE INFO**



## 2020 PUBLICATIONS

All University of Melbourne publications can be downloaded from the prospectus and course guide portal:

▶ **DOWNLOAD HERE**



CONTACT NAME	CONTACT INFORMATION	RESPONSIBILITIES
<b>Wendy Holden</b> Associate Director, Onshore Recruitment	(03) 8344 4635 <b>wendymh@unimelb.edu.au</b>	<ul style="list-style-type: none"> <li>Onshore Recruitment Management</li> </ul>
<b>Lois Carlton</b> Recruitment Relationship Manager	(03) 8344 8809 <b>lcarlton@unimelb.edu.au</b>	<ul style="list-style-type: none"> <li>Equity and rural programs</li> <li>Career Practitioner liaison</li> <li>Off-campus events</li> <li>Schools in Melbourne and Ballarat</li> <li>New South Wales</li> </ul>
<b>Samantha Fossey</b> Recruitment Relationship Manager	(03) 9035 6330 <b>samantha.fossey@unimelb.edu.au</b>	<ul style="list-style-type: none"> <li>High-achieving student programs</li> <li>Graduate student recruitment</li> <li>Schools in Melbourne Outer East</li> <li>New Zealand</li> <li>Onshore education representatives</li> </ul>
<b>John Paul Collins</b> Account Manager	(03) 8344 5619 <b>collins@unimelb.edu.au</b>	<ul style="list-style-type: none"> <li>Schools in Melbourne South East</li> </ul>
<b>TBC</b> Recruitment Relationship Coordinator	(03) 9035 8392 <b>TBC</b>	<ul style="list-style-type: none"> <li>Programs and events for international onshore students in secondary schools and foundation studies</li> <li>Schools in Mornington Peninsula and Melbourne Inner South</li> <li>Western Australia</li> </ul>
<b>Fiona Burns</b> Recruitment Relationship Coordinator	(03) 8344 0598 <b>fiona.burns@unimelb.edu.au</b>	<ul style="list-style-type: none"> <li>Graduate student recruitment events</li> <li>My Melbourne Future</li> <li>Schools in Geelong</li> <li>South Australia</li> </ul>
<b>TBC</b> Student Recruitment Officer	(03) 8344 7508 <b>TBC</b>	<ul style="list-style-type: none"> <li>Open Day</li> <li>VCE and Victorian Careers expo</li> <li>Course Information Day</li> <li>Schools in Melbourne South East</li> <li>Tasmania</li> </ul>
<b>TBC</b> Student Recruitment Officer	(03) 8344 3994 <b>TBC</b>	<ul style="list-style-type: none"> <li>Trinity College Foundation Studies</li> <li>A Day at Melbourne event</li> <li>Schools in Melbourne Western suburbs</li> </ul>
<b>Kath Waddington</b> Student Recruitment Officer	(03) 8344 4319 <b>k.waddington@unimelb.edu.au</b>	<ul style="list-style-type: none"> <li>University of Melbourne Extension Program</li> <li>Open Day</li> <li>Schools in rural Western District and Wimmera</li> <li>Australian Capital Territory</li> </ul>
<b>TBC</b> Student Recruitment Officer	(03) 9035 5860 <b>TBC</b>	<ul style="list-style-type: none"> <li>Kwong Lee Dow Young Scholars Program</li> <li>Elite athletes and artistic performers</li> <li>Melbourne North West</li> <li>Northern Territory</li> </ul>
<b>Barney Wray</b> Student Recruitment Officer	(03) 8344 2912 <b>barney.wray@unimelb.edu.au</b>	<ul style="list-style-type: none"> <li>Aspiring Scholars</li> <li>Host program</li> <li>Publication orders</li> <li>Queensland</li> </ul>
<b>Stephanie Wilson</b> Student Recruitment Officer	(03) 8344 8376 <b>stephanie.wilson1@unimelb.edu.au</b>	<ul style="list-style-type: none"> <li>Melbourne Connect program</li> <li>Access Melbourne</li> <li>Schools in Melbourne North East</li> <li>Schools in Shepparton, Hume and Goulburn</li> </ul>
<b>Allana Linn</b> Student Recruitment Officer (HEPPP)	(03) 9035 7977 <b>allana.linn@unimelb.edu.au</b>	<ul style="list-style-type: none"> <li>Rural Programs</li> <li>Tertiary Information service</li> <li>Meet Melbourne</li> <li>Schools in Latrobe- Gippsland and North West</li> </ul>
<b>Lisa Fairweather</b> Student Recruitment Assistant	(03) 9035 4612 <b>lisa.fairweather@unimelb.edu.au</b>	<ul style="list-style-type: none"> <li>Support for Associate Director</li> <li>Support for Career Practitioner liaison</li> <li>Support for events</li> </ul>

**Intellectual property**  
Copyright in this publication is owned by the University and no part of it may be reproduced without the permission of the University.

**Disclaimer**  
The University endeavours to ensure that information contained in this publication is current and correct at the time of publishing (January 2020).  
CRICOS Provider Code: 00116K

**Melbourne ADF Careers Expo, Education Day****Friday, 21<sup>st</sup> February 2020****9:30am – 3pm****Melbourne Convention and Exhibition Centre**

The Education Day of the event is aimed to provide Schools, Universities and TAFEs in Victoria with both informative and interactive activities. This will provide students with a better understanding of the many career opportunities available within the ADF.

**List of Exhibitors and Displays:**

- ADF Drone Display
- Army Reserves
- Australian Defence Force Academy
- Aviation
- Business, Administration and Education
- Combat and Security
- Communications, IT and Intelligence
- Defence Health
- Defence Work Experience Program
- Engineering
- Fitness
- Virtual Reality
- Flight Simulators
- Gap Year
- Healthcare, Science and Chaplaincy
- HMAS Cerberus
- Indigenous Pathways
- Life in the Navy
- Logistics, Hospitality and Support
- Officers and Management
- Submariner
- Trades
- Vehicle Display

**Information sessions:**

10:00am – 11:00am – Army Reserve Information Session  
11:00am – 12:00pm – ADF Careers Information Session  
12:15pm – 1:15pm – Women in Defence Q & A  
1:30pm – 2:30pm Trades Q & A  
1:30pm – 2:30pm ADF Gap Year Information Session

This event is **FREE** to attend.

**Don't miss this spectacular careers event!**

**DEFENCE FORCE RECRUITING**



# School Council Elections - Information for Parents

## WHAT IS A SCHOOL COUNCIL AND WHAT DOES IT DO?

All government schools in Victoria have a school council. They are legally constituted bodies that are given powers to set the key directions of a school within statewide guidelines. In doing this, a school council is able to directly influence the quality of education that the school provides for its students.

## WHO IS ON THE SCHOOL COUNCIL?

For most school councils, there are three possible categories of membership:

- A mandated elected Parent category – more than one-third of the total members must be from this category. Department of Education and Training (DET) employees can be Parent members at their child's school as long as they are not engaged in work at the school.
- A mandated elected DET employee category – members of this category may make up no more than one-third of the total membership of school council. The principal of the school is automatically one of these members.
- An optional Community member category – members are coopted by a decision of the council because of their special skills, interests or experiences. Department employees are not eligible to be Community members.

Generally, the term of office for all members is two years. The term of office of half the members expires each year, creating vacancies for the annual school council elections.

## WHY IS PARENT MEMBERSHIP SO IMPORTANT?

Parents on school councils provide important viewpoints and have valuable skills that can help shape the direction of the school.

Those parents who become active on a school council find their involvement satisfying and may also find that their children feel a greater sense of belonging.

## DO I NEED SPECIAL EXPERIENCE TO BE ON SCHOOL COUNCIL?

Each member brings their own valuable life skills and knowledge to the role. Councilors may need to develop skills and acquire knowledge in areas that are unfamiliar to them. What you do need is an interest in your child's school and the desire to work in partnership with others to help shape the school's future.

## HOW CAN YOU BECOME INVOLVED?

The most obvious way is to vote in the elections, which are held in Term one each year. However, ballots are only held if more people nominate as candidates than there are positions vacant.

In view of this, you might consider

- standing for election as a member of the school council
- encouraging another person to stand for election.

## WHAT DO YOU NEED TO DO TO STAND FOR ELECTION?

The principal will issue a Notice of Election and Call for Nominations following the commencement of Term one each year. All school council elections must be completed by the end of March unless the usual time line has been varied by the Minister.

If you decide to stand for election, you can arrange for someone to nominate you as a candidate or you can nominate yourself in the Parent category.

Department employees whose child is enrolled in a school in which they are not engaged in work are eligible to nominate for parent membership of the school council at that school.

Once the nomination form is completed, return it to the principal within the time stated on the Notice of Election. You will receive a Nomination Form Receipt in the mail following the receipt of your completed nomination.

Generally, if there are more nominations received than there are vacancies on council, a ballot will be conducted during the two weeks after the call for nominations has closed.

**REMEMBER**

- Ask at the school for help if you would like to stand for election and are not sure what to do
- Consider standing for election to council this year
- Be sure to vote in the elections.

**Contact the principal for further information.**



## SCHEDULE 4: NOTICE OF ELECTION AND CALL FOR NOMINATIONS

An election is to be conducted for members of the school council of

### MILL PARK SECONDARY COLLEGE

Nomination forms may be obtained from the school and **must be lodged by 4.00 pm on Friday 14 February 2020.**

The ballot it will close at 4.00 pm on Monday 2 March 2020

Following the closing of nominations, a list of the nominations received will be posted at the school.

The terms of office, membership categories and number of positions in each membership category open for election are as follows:

MEMBERSHIP CATEGORY	TERM OF OFFICE	NUMBER OF POSITIONS
Parent member	From the day after the date of the declaration of the poll in 2020. to and inclusive of the date of the declaration of the poll in 2021.	2
	From the day after the date of the declaration of the poll in 2020. to and inclusive of the date of the declaration of the poll in 2022.	4
DET employee member	From the day after the date of the declaration of the poll in 2020. to and inclusive of the date of the declaration of the poll in 2022.	2
Student member	From the day after the date of the declaration of the poll in 2020. to and inclusive of the date of the declaration of the poll in 2022.	1

If the number of nominations is less than the number of vacancies, a notice to that effect and calling for further nominations will be posted in a prominent position at the school.



**Trish Horner**  
College Principal

## FINANCIAL ASSISTANCE INFORMATION FOR PARENTS

Every Victorian child should have access to the world of learning opportunities that exist beyond the classroom. The Camps, Sports and Excursions Fund helps ensure that no student will miss out on the opportunity to join their classmates for important, educational and fun activities. It is part of making Victoria the Education State and the Government's commitment to breaking the link between a student's background and their outcomes.

### CAMPS, SPORTS & EXCURSIONS FUND (CSEF)

School camps provide children with inspiring experiences in the great outdoors, excursions encourage a deeper understanding of how the world works and sports teach teamwork, discipline and leadership. All are part of a healthy curriculum.

CSEF is provided by the Victorian Government to assist eligible families to cover the costs of school trips, camps and sporting activities.

If you hold a valid means-tested concession card or are a temporary foster parent, you may be eligible for CSEF. A special consideration category also exists for asylum seeker and refugee families. The allowance is paid to the school to use towards expenses relating to camps, excursions or sporting activities for the benefit of your child.

The annual CSEF amount per student is:

- \$125 for primary school students
- \$225 for secondary school students

### MORE INFORMATION

For more information about the CSEF visit  
[www.education.vic.gov.au/csef](http://www.education.vic.gov.au/csef)

### HOW TO APPLY

New applicants should contact the school office to obtain a CSEF application form or download from [www.education.vic.gov.au/csef](http://www.education.vic.gov.au/csef)

If you applied for the CSEF at your child's school in 2019, you do not need to complete an application form in 2020 unless there has been a change in your family circumstances.

You only need to complete an application form if any of the following changes have occurred:

- **new student enrolments;** your child has started or changed schools in 2020 or you did not apply in 2019.
- **changed family circumstances;** such as a change of custody, change of name, concession card number, or new siblings commencing at the school in 2020.

Check with the school office if you are unsure.

