



## Principal Team Report

We have been thrilled with the way the Year 11 and 12 students have transitioned back to face to face learning over the last 2 weeks. Teachers and students have enhanced their respect for each other and are working together to achieve excellence.

The Senior Campus atmosphere has been positive and focused. Some students are really anxious about the challenges they experienced during remote learning. We need to reassure them that we can support them to make significant progress now that we are all back on site. Please phone the school if you are worried about your child.

We will be welcoming back Year 7 to 10 students on Tuesday 9 June. We expect that there are some students and their families who will be feeling a little anxious about the return to school. This is normal and completely understandable.

### MAKING OUR SCHOOL SAFE

- Any staff or student who is unwell and may show symptoms of COVID-19, is asked not come to school and instead seek medical advice on testing for coronavirus.
- All government schools underwent a 'deep clean' over the term one break. Since then, we have a cleaner onsite, all day, providing continuous cleaning of high-touch surfaces. This will continue at our school for the foreseeable future. All classrooms have been supplied with hand sanitisers as well as wipes for regular cleaning of shared equipment.
- All adults in the school are following strict personal hand-hygiene practices, adhering to physical distancing measures and are ready to support our young learners when they return next week.
- Students will now be required to bring their own drink bottles to school as drinking directly from our bubbler taps will be prohibited. They should bring their own supply of tissues for sneezing and coughing into, and hand sanitiser for their personal use.
- Students will be asked to only have non-contact greetings with their friends, keep a 1.5m distance from others where possible (this may not be possible in all areas of the school), play non-contact sports during break times, follow teacher instructions regarding physical distancing at the canteen and adhering to room limit numbers in spaces such as the library and general office.
- Students will be reminded regularly about not sharing their equipment, food or drink bottles, and being patient at lockers to allow safe access for others.
- Many of our teaching spaces have hand washing facilities and these have all been restocked to ensure students in those rooms are able to wash and dry their hands before going to recess and lunch each day.

# Principal Team Report

## REMINDER OF EXPECTATIONS

All students are expected:

- to be on time
- to be in complete school uniform
- to put their phones in their lockers during the school day
- bring their own device
- be ready to learn

If you drive your child to and from school, we ask all families to remain in their cars during drop off and pick up times. If parents/carers need to contact a staff member, please call the school first. Our aim is to significantly reduce the number of adult visitors to our school. If parents/carers do visit our general office, we ask you to use the hand sanitiser in the foyer and adhere to the space markers on the floor.

We aim to ensure the ongoing health and wellbeing of our young people and support them to re-engage with onsite learning as quickly as possible.

## EVENT CANCELLATIONS

With restriction in place at present we have had to look at our 2020 plans. It is for this reason we regret to inform you that the Mill Park Secondary College Production –“Wicked” will not take place in July 2020. Therefore, it will be cancelled for this year and rescheduled for 2021.

It is still unclear when and if Victoria will allow the use of theatres and what capacity restrictions will be placed on theatres when they do reopen. We see it unlikely to be able to perform to the large general public in a community forum. We can assure you that this decision has been taken on the basis of the best health advice available to our state

We understand that some students and families may be disappointed about the production for 2020 being cancelled but we are hopeful we will be able to continue with one in 2021. We will keep you updated about changes for 2021 in due course.

Students who are currently in the cast, who will be enrolled at Mill Park Secondary College in 2021, will be automatically included in the 2021 cast if they wish to be involved.

We may have to change the way we do some things or cancel other events in the future and will keep you informed as these decisions are made.

## PARKING AND SAFETY AROUND SCHOOLS

With the return of on-site learning for students, this is just a reminder for parents about parking and safety around schools. Please ensure that you remain in your vehicles during drop off and pick up of students. Please find at the back of this newsletter a flyer from the City of Whittlesea.

We thank you for your co-operation.

***Just a reminder that Monday 8 June is a student free day as it is the Queen's Birthday Public Holiday. On site learning will re-commence on Tuesday 9th June for students in all year levels. Friday 12 June is also a student free day as it is a college wide Report Writing Day.***



Trish Horner  
College Principal



Richard Dungey  
Senior Campus  
Principal



Karen Eastlake  
Middle Years  
Campus Principal



# College Report

## MENTORING AT MILL PARK SECONDARY COLLEGE

In March this year, mentors from PwC and students from Mill Park Secondary College participated in mentoring sessions facilitated by ABCN (Business partnering with Education). This was a great experience for those involved with lots of good advice being provided in a relaxed setting. Unfortunately the last session was not able to take place due to schools going into remote learning but the girls still got a lot out of the first sessions. Thanks to ABCN and PwC for this opportunity.





## Year 12 VCAL – OHS Training

As part of Work Related Skills, over 30 students were inducted in all things OHS this week ahead of the task of conducting an audit of the Middle Years campus. Students signed in, vested and badged up and worked through a series of activities around workplace injuries, OHS roles and responsibilities at the workplace, identification of OHS problems that arise and preparation for working in a team to conduct OHS procedures.



LIKE US at <https://www.facebook.com/millparksc/>

This screenshot shows you where to find SEE FIRST when you are liking the page.

### INSTRUCTIONS

1. 'Like' Mill Park Secondary College.
2. To the right of the 'Like' button you will see 'Following' with a drop down arrow.
3. Please select 'See First in Newsfeed' and 'Notifications On (Events)'.



### 2021 YEAR 7 Accelerated Learning Programs — Second Round Testing Opportunity.

The SEAL Program, STEM program and Accelerated ENGLISH Program are offering an opportunity for a **second round of testing** to Grade 6 students. Students will sit an aptitude test to determine suitability for acceptance into any of the three programs. This aptitude test takes place on **Monday 20 July** beginning at 9am and will last for approximately 3 hours, at a cost of \$75.

Applications close on **Wednesday 24 June** and payment to be received before the testing date.

Further enquiries should be directed to Anastasia Kalavritinos on 9409 8222.

Discover how you can *Create your future!*

# Career News

## Friday 5 June



### Discover What's Next Webinar Series

RMIT University will be hosting a series of **Discover What's Next** webinars aimed at providing students and parents with information on the wide range of study areas at the university. Students will have the opportunity to ask questions to RMIT staff and students about the courses they might be interested in. The webinars will take place from 9 June – 30 July 2020 and commence at 6.00pm, and students can register for as many as they wish.

The webinars are -

All you need to know about RMIT	Tuesday 9 June	<a href="#">Register here</a>
Art, Design, and Architecture	Thursday 11 June	<a href="#">Register here</a>
Communications, Journalism, and Media	Thursday 18 June	<a href="#">Register here</a>
Business and Law	Tuesday 23 June	<a href="#">Register here</a>
Engineering	Thursday 25 June	<a href="#">Register here</a>
Flight Training and Aviation	Tuesday 30 June	<a href="#">Register here</a>
Science	Thursday 2 July	<a href="#">Register here</a>
Computer Science and Information Technology	Thursday 9 July	<a href="#">Register here</a>
Fashion	Thursday 16 July	<a href="#">Register here</a>
Health and Biomedical Sciences	Thursday 23 July	<a href="#">Register here</a>
Education and Social Sciences	Tuesday 28 July	<a href="#">Register here</a>
Property, Building & Construction	Thursday 30 July	<a href="#">Register here</a>



**VICTORIA  
UNIVERSITY**



### Reminder: Upcoming Information Evenings by Webinars

There are still a few Information Evenings scheduled for June. A reminder that these virtual webinars will take place from 6.00pm to 7.00pm.

**Sessions still to be held:**

- Business, Tourism, Hospitality & Event Management
- Psychology & Social Work
- Biomedical, Exercise, Environmental & Biotechnical Sciences

Register for one or more sessions at [VU Information Evenings by Webinars](#)

## Talk with Industry Specialists

*Talk with Industry events, a series of webinar panel discussions featuring ACU graduates across a range of different professions. Get helpful advice and find out what it is really like to work in your area of interest.*

Students are encouraged to join the webinars to:

- Hear from ACU graduates about their work experiences
- Get tips and advice for pursuing a career in an area of interest

<b>Business &amp; IT Professionals</b>	2 June, 5.00pm – 5.45pm	<a href="#">Register here</a>
<b>Lawyers</b>	3 June, 5.00pm – 5.45pm	<a href="#">Register here</a>
<b>Occupational Therapists &amp; Speech Pathologists</b>	17 June, 5.00pm – 5.45pm	<a href="#">Register here</a>
<b>Exercise Scientists &amp; Physiotherapists</b>	1 July, 6.00pm – 7.00pm	<a href="#">Register here</a>
<b>Arts Graduates</b>	18 August, 5.00pm – 6.00pm	<a href="#">Register here</a>
<b>Nurses, Midwives, and Paramedics</b>	17 September, 6.00pm – 7.00pm	<a href="#">Register here</a>
<b>Teachers</b>	30 September, 6.00pm – 7.00pm	<a href="#">Register here</a>



**Schindler**

## Apprentice Information Webinar

***Are you looking to start a career working in a dynamic and exciting environment? Do you want to work hands on with innovative and cutting-edge engineering technologies?***

*Schindler Lifts Australia is one of the largest suppliers of new escalators and elevators in Australia today. It has over 1,200 employees across Australia who design, install, service and modernise urban transport systems for almost every building type.*

Most people considering a career in electrotechnology usually think about becoming a domestic (home) electrician, but this is only a small part of the electrical industry.

Apprentices in the lift industry not only learn electrical skills, but all the skills required to install, service, and repair and modernise lifts and escalators.

Students keen on finding out more about an **electrical apprenticeship with Schindler** are encouraged to register for the online [Apprentice Information Night](#) taking place on Wednesday 1 July 2020, from 6.00pm – 7.00pm.



## Deakin Explore

**Deakin Explore** is an excellent resource that allows students to kick-start their course and career exploration. Students can start with courses that lead to a career or start with careers to find courses that lead to it. Students can filter courses and careers by what matters to them; each course and career lists others that are similar thus allowing students to broaden their options, and students can save their favourite courses and careers to access later, and even share them by email, Facebook and even Twitter.

Students are encouraged to visit [Deakin Explore](#) and familiarise themselves with this excellent resource.

### ⇒ Student Excellence Academy

The [La Trobe Student Excellence Academy](#) provides support and enrichment opportunities that expand the study and employment advantages to current students. Current senior students are encouraged to browse the link included to learn more about the advantages of being part of this program should you enrol at La Trobe University.

### ⇒ La Trobe Accelerator Program

Students with a keen interest in entrepreneurship, *new* business start-ups, etc. might be keen on learning more about the [La Trobe Accelerator Program](#) which is open to current La Trobe students and connects participants with *mentors, resources, seminars, and workshops*, enabling them to succeed in their new endeavours. Participants have the opportunity to do internships, and receive business development support, and start-up teams may be awarded \$10,000 as seed-funding for their new business.

Students are encouraged to browse the above link, and also visit the [Frequently Asked Questions](#) link which provides very detailed information.



## Principal's Recommendation Scheme at CQU

*At CQUniversity we believe senior schooling results are important, but we also believe that other factors such as motivation, talent, and passion can lead to student success at university. So, we have introduced a pilot program, the Principal's Recommendation Scheme, that allows Year 12 students to apply to a CQUniversity course based on the recommendation of their high school Principal rather than ATAR.*

So, CQUniversity's Principal's Recommendation Scheme provides an alternate entry pathway to CQUniversity courses that is based on the recommendation of a students' high school Principal and not reliant on whether they have received an ATAR.

Find out more at [Principal's Recommendation Scheme at CQU](#)



## What does an Otolaryngologist do?

The *Career Cornerstone* website indicates that an otolaryngologist is a **head and neck surgeon** who provides complete medical and surgical care for patients with diseases and disorders that affect the *ears, nose, throat, the respiratory and upper alimentary systems and related structures of the head and neck*.

An otolaryngologist diagnoses and provides medical and/or surgical therapy or prevention of diseases, allergies, neoplasms, deformities, disorders and/or injuries of the ears, nose, sinuses, throat, respiratory and upper alimentary systems, face, jaws, and the other head and neck systems.

Head and neck oncology, facial plastic and reconstructive surgery, and the treatment of disorders of hearing and voice are fundamental areas of expertise.

According to the [Royal Australasian College of Surgeons](#), to become an otolaryngologist, one must have medical and surgical training and experience as part of the selection into the training.

## **Snapshot of Australian Catholic University in 2020**

- ACU has over 35,000 students nationally spread over seven campuses across Australia and the campus in Rome - [ACU Campuses](#)
- ACU is the 3<sup>rd</sup> top Australian university for undergraduate employment, with more than 93% of its graduates finding employment within 4 months of graduation, and as ranked 26<sup>th</sup> in the world for sport science, and 32<sup>nd</sup> in the world for nursing - [Excellence at ACU](#)
- Besides its wide range of institutes and centres, ACU also has four faculties –
  - [Education and Arts](#)
  - [Health Sciences](#)
  - [Law and Business](#)
  - [Theology and Philosophy](#)
- [ACU Student Accommodation](#) is offered at a number of its campuses
- ACU has relationships with more than 200 universities and education institutions in the Americas, Europe, Africa and Asia, with over [25% of](#) bachelor's degree students travelling overseas during their studies. Students can attend an overseas university in more than 35 countries, complete international internships, and work in community programs around the world – all while receiving credit towards their degree - [Study Abroad and Exchange and Study Overseas](#)
- Community engagement is also a core part of every student's experience at ACU, to the point where it's embedded within its courses. This allows students to give back to their communities and make a difference through opportunities such as volunteer experience programs - [Community Engagement](#)
- ACU has an alternative entry scheme called Community Achiever Program (CAP). This program is designed to acknowledge Year 12 students who have participated in significant voluntary community service programs while at school. A significant benefit of the program is that successful applicants receive a conditional university offer well ahead of the usual tertiary admissions announcements - [Community Achiever Program \(CAP\)](#)
- ACU also has an Elite Athlete and Performer Program (EAPP) which has been designed to support and encourage students in managing both areas of their life to ensure that elite student athletes achieve their goals - [Elite Athlete and Performer Program](#)
- [Passion for Business Program \(P4B\) is a guaranteed early entry program for Year 12 students, designed to nurture a students' learning passion and give them a step up in their future business career - Passion for Business Early Entry Program](#)
- [Passion for Law is a guaranteed early entry program for Year 12 students passionate about studying law - Passion for Law Early Entry Program](#)
- ACU offers many [courses](#) and introduced a number of *new* courses recently introduced include -
  - Bachelor of Information Technology
  - Bachelor of Information Technology / Bachelor of Business Administration
  - Bachelor of Psychological Science / Bachelor of Arts
  - Bachelor of Psychological Science / Bachelor of Commerce
  - Bachelor of Psychological Science / Bachelor of Exercise Science
  - Bachelor of Psychological Science / Bachelor of Laws
  - Bachelor of Psychology (Honours)
  - Bachelor of High-Performance Sport
  - Bachelor of Sport and Outdoor Education
- [ACU College](#) provides excellent pathways to select bachelor's degrees at ACU. Courses on offer at ACU College include *nursing*, and *early childhood education*.





## Architecture, Construction & Surveying Courses in Victoria in 2020

Below is a list of some single undergraduate degrees offering architecture, building & construction, and surveying as specialisations at Victorian institutions. To find out about all similar courses on offer (including double degree options) at both TAFEs and universities, visit [VTAC](https://www.vtac.vic.edu.au). Students are encouraged to explore pathway courses to these

INSTITUTION	COURSE	VCE PREREQUISITES	2020 ENTRY REQUIREMENTS
<b>Deakin</b> (Geelong Waterfront Campus)	Architecture	Units 3 and 4: a study score of at least 25 in English (EAL) or at least 20 in English other than EAL.	ATAR 70.35
	Construction Management	Units 3 and 4: a study score of at least 25 in English (EAL) or at least 20 in English other than EAL.	ATAR 60.40
<b>Holmesglen</b> (Chadstone Campus)	Building Surveying	n/a, but ATAR is used for selection	ATAR n/a
	Construction Management and Economics	n/a, but ATAR is used for selection	ATAR n/a
<b>Monash</b> (Caulfield Campus)	Architectural Design and Master of Architecture	Units 3 and 4: a study score of at least 30 in English (EAL) or at least 25 in English other than EAL.	ATAR 82.60
<b>RMIT</b> (City Campus)	Architectural Design	Units 3 and 4: a study score of at least 30 in English (EAL) or at least 25 in English other than EAL.	ATAR R.C. Pre-Selection Kit Interview (some)
	Landscape Architecture	Units 3 and 4: a study score of at least 30 in English (EAL) or at least 25 in English other than EAL.	ATAR R.C. Pre-Selection Kit Folio Presentation (some)
	Construction Management	Units 3 and 4: a study score of at least 30 in English (EAL) or at least 25 in English other than EAL; Units 3 and 4: a study score of at least 20 in any Mathematics.	ATAR 80.00
	Surveying	Units 3 and 4: a study score of at least 30 in English (EAL) or at least 25 in English other than EAL; Units 3 and 4: a study score of at least 20 in one of Maths: Mathematical Methods or Maths: Specialist Mathematics.	ATAR 74.25
<b>Swinburne</b> (Hawthorn Campus)	Architecture	Units 3 and 4: a study score of at least 30 in English (EAL) or at least 25 in English other than EAL.	ATAR 75.05
	Interior Architecture	Units 3 and 4: a study score of at least 30 in English (EAL) or at least 25 in English other than EAL; Units 3 and 4: a study score of at least 20 in one of Art, Product Design And Technology, Media, Interactive Digital Media C, Creative And Digital Media (VCE VET) I, Studio Arts, Systems Engineering or Visual Communication Design.	ATAR 71.25
<b>University of Melbourne</b> (Parkville Campus)	Design	Units 3 and 4: a study score of at least 30 in English (EAL) or at least 25 in English other than EAL. Units 3 and 4: a study score of at least 25 in Mathematical Methods <i>if going to major in construction or property</i>	ATAR 86.55
<b>Victoria University</b> (Footscray Park Campus)	Building Surveying	Units 3 and 4: a study score of at least 25 in English (EAL) or at least 20 in English other than EAL.	ATAR n/a
	Construction Management	Units 3 and 4: a study score of at least 25 in English (EAL) or at least 20 in English other than EAL.	ATAR n/a



**City of  
Whittlesea**

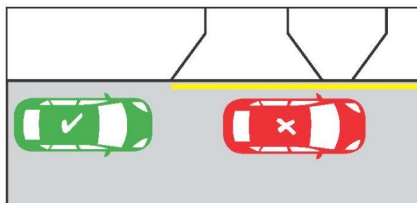
## PARKING AND SAFETY AROUND SCHOOLS

### Speed



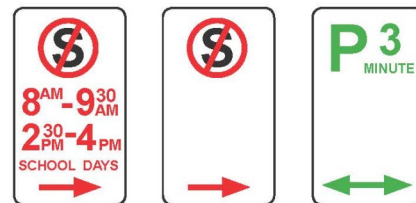
Look out for the reduced speed limit around schools and slow down to improve safety.

### Yellow edge line



A driver must not stop on the side of a road marked with a yellow edge line.

### Parking/Stopping signage



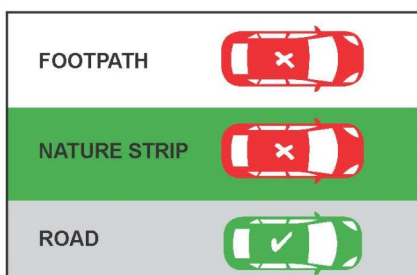
No stopping areas must be kept clear. If times/days are specified, restrictions are only applicable to the specified times/days. You cannot park in a P3 minute area for longer than three minutes.

### School crossings



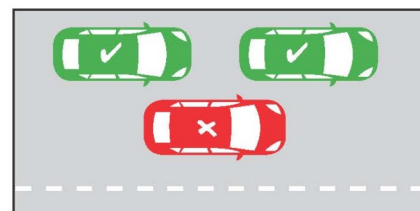
- Look out for flags and Crossing Supervisors
- You must stop for anyone waiting to cross, or who has started crossing
- Please remain stopped until the crossing is clear.

### No parking on nature strips/footpaths



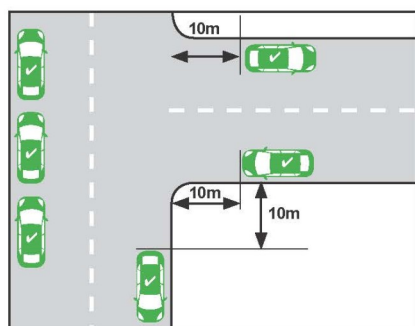
Parking is illegal on nature strips and footpaths.

### Double parking



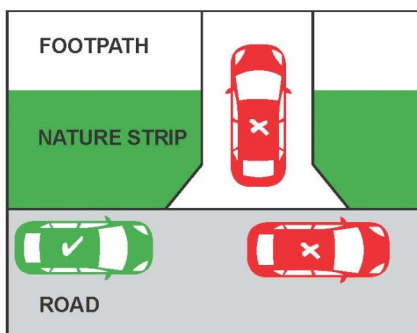
It is illegal to double park at any time. This affects the flow of traffic.

### Within 10 metres of an intersection



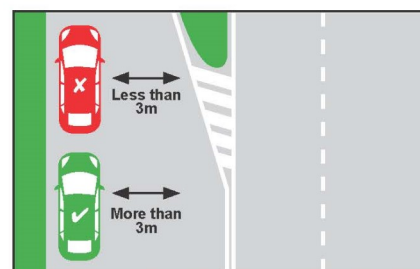
A driver must not stop with any part of their vehicle within 10 metres of an intersection unless signed otherwise.

### Stopping across driveways



It is illegal to, stop/park across a driveway unless you stay in the car are there for no more than two minutes and move immediately if required to do so to allow entry or exit by the owner/occupier.

### 3 metre gap for signage



At least 3 metres must be left between your vehicle and the centre dividing line to allow other vehicles to pass safely and not obstruct traffic.

### What can you do to stay safe

- Supervise your children in or near traffic
- Walk or cycle to school with your child
- Respect all road rules, parking signs and instructions from authorities
- Wait on the same side of the street as your child
- Always let your child out of the kerb side of the car.

#### Free Telephone Interpreter Service

العربية	9679 9871	Italiano	9679 9874	ਪੰਜਾਬੀ	9679 9879	Tiếng Việt	9679 9878
Ελληνικά	9679 9873	Македонски	9679 9875	தமிழ்	9679 9879	Other	9679 9879
हिंदी	9679 9879	简体中文	9679 9857	Türkçe	9679 9877		



# Young Women's Leadership Program

- Talk about women's issues, gender equity and feminism
- Connect with other young women
- Feel empowered to be a leader
- Challenge gender norms
- Learn about women's health and mental health.

FREE  
ONLINE  
program for  
young women  
aged between  
15-20 years

Mondays 4pm to 6pm, 1 June to 3 August 2020

To book your place follow the link  
<https://Baseline.as.me/YWLP>



Contact Holly 0418914979 or email [baseline@whittlesea.vic.gov.au](mailto:baseline@whittlesea.vic.gov.au)